

\$1,435,000 - 49 Stratford Place Sw, Calgary

MLS® #A2211626

\$1,435,000

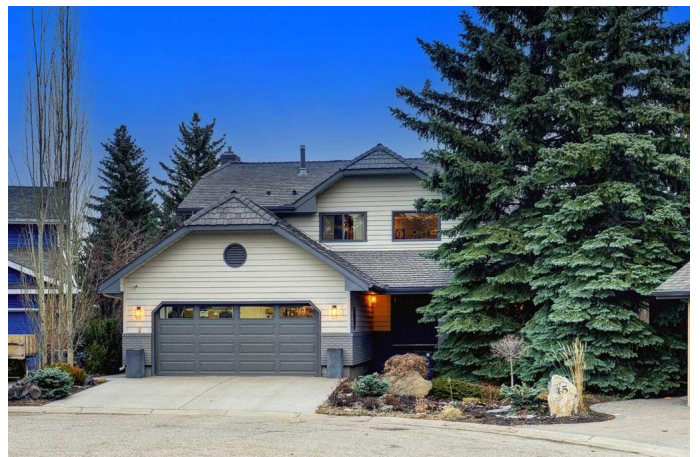
4 Bedroom, 4.00 Bathroom, 2,531 sqft

Residential on 0.16 Acres

Strathcona Park, Calgary, Alberta

BACKING DIRECTLY ONTO RAVINE!

Original owners had the FIRST pick of every lot in Strathcona Park, and they wisely chose THIS ONE to build their dream home. They have lovingly maintained and upgraded it ever since, and now it's ready for your family to create another lifetime of memories. Some of the significant improvements include all newer windows, an Enviro-Shake composite roof, two new furnaces, and so much more. This home exudes rare elegance and class. As you swing open the front door, you'll immediately see a spectacular staircase with wrought iron railing, and the open-to-above floor-to-ceiling stacked-travertine wood-burning fireplace in the formal living area to the right. Also on the main floor is a stunning, extra-large family room centred by a gas-burning fireplace, an updated kitchen including granite counters and newer stainless steel appliances, a breakfast nook area and a formal dining room. Upstairs is a loft/library area (big enough for a baby grand piano) and three large bedrooms—all overlooking the backyard and ravine. The lower walkout level has a large open recreation area, an office attached to another room (used as a guest bedroom but currently does not have legal egress), an ensuite, and a huge storage/utility room. You MUST spend time in the backyard of this home! Stand quietly and experience the absolute peace and serenity created from 45 years of nurturing care, to create an oasis that now requires only minimal maintenance. You can access the



ravine walkway directly from your backyard, leading to the playing fields, all the way to the bottom of the community. Itâ€™s also only a short walk to the very active Community Centre, tennis courts and outdoor rink, as well as both John Costello and Olympic Heights Schools. If you want to set down roots in your forever home, here is your once-in-a-lifetime opportunity.

Built in 1980

Essential Information

MLS® #	A2211626
Price	\$1,435,000
Bedrooms	4
Bathrooms	4.00
Full Baths	3
Half Baths	1
Square Footage	2,531
Acres	0.16
Year Built	1980
Type	Residential
Sub-Type	Detached
Style	2 Storey
Status	Active

Community Information

Address	49 Stratford Place Sw
Subdivision	Strathcona Park
City	Calgary
County	Calgary
Province	Alberta
Postal Code	T3H 1H7

Amenities

Parking Spaces	4
Parking	Double Garage Attached
# of Garages	2

Interior

Interior Features	Built-in Features, High Ceilings, See Remarks
Appliances	Dishwasher, Dryer, Electric Stove, Microwave, Refrigerator, Washer, Window Coverings
Heating	Forced Air, Natural Gas, High Efficiency
Cooling	Central Air
Fireplace	Yes
# of Fireplaces	2
Fireplaces	Family Room, Gas, Living Room, Wood Burning, See Remarks
Has Basement	Yes
Basement	Finished, Full, Walk-Out

Exterior

Exterior Features	Balcony, Garden, Private Yard
Lot Description	Backs on to Park/Green Space, Pie Shaped Lot
Roof	Rubber
Construction	Wood Siding
Foundation	Poured Concrete

Additional Information

Date Listed	April 17th, 2025
Days on Market	2
Zoning	R-CG

Listing Details

Listing Office	RE/MAX Realty Professionals
----------------	-----------------------------

Data is supplied by Pillar 9â„¢ MLS® System. Pillar 9â„¢ is the owner of the copyright in its MLS® System. Data is deemed reliable but is not guaranteed accurate by Pillar 9â„¢. The trademarks MLS®, Multiple Listing Service® and the associated logos are owned by The Canadian Real Estate Association (CREA) and identify the quality of services provided by real estate professionals who are members of CREA. Used under license.